

PART OF THE SE.1/4, OF SECTION 33, T.7N., R.1E., S.L.B. & M.  
OSPREY RANCH SUBDIVISION PH 1

193

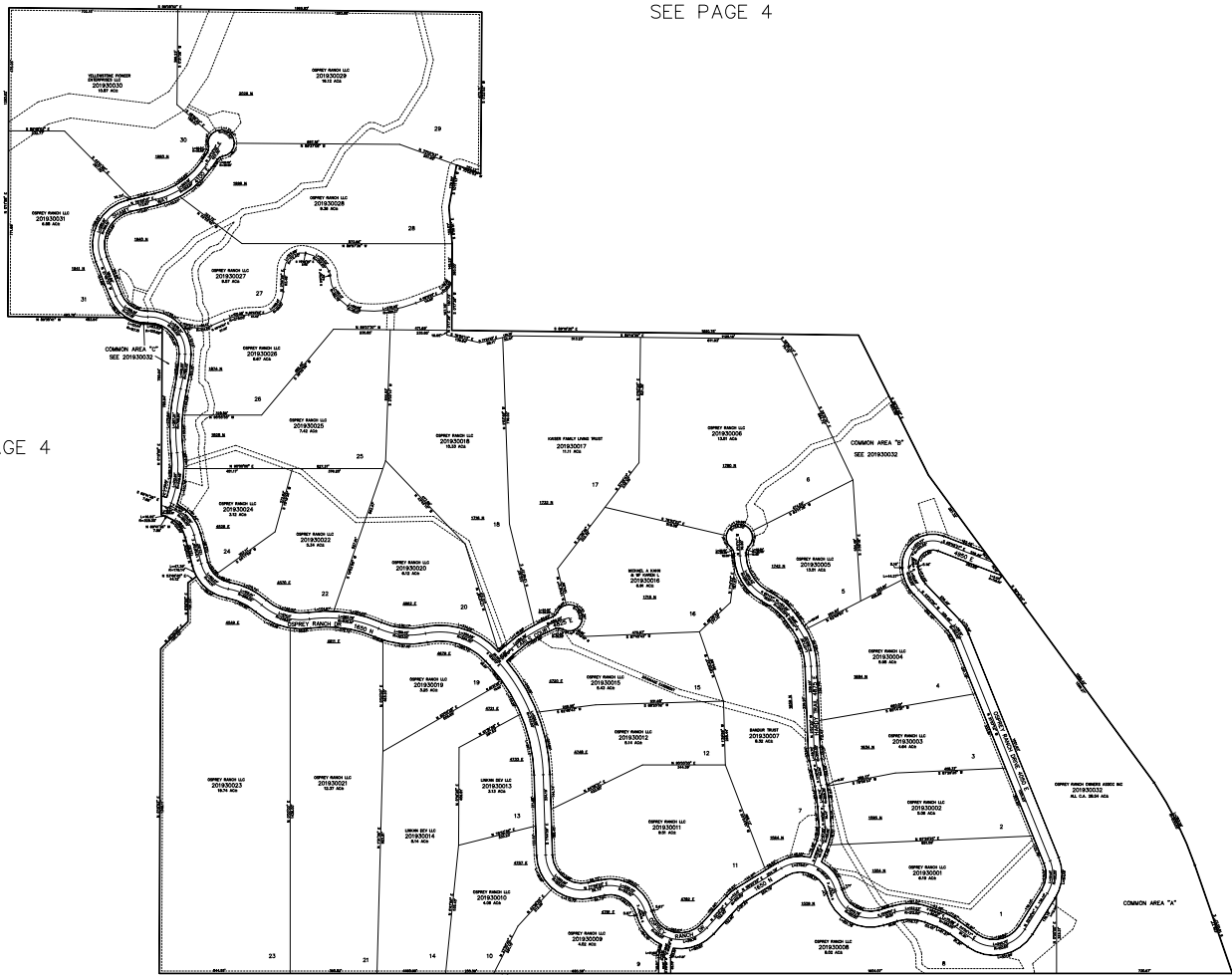
IN WEBER COUNTY

TAXING UNIT: 28

SCALE 1" = 400'

SEE PAGE 4

SEE PAGE 4



SEE PAGE 3

10' UTILITY & DRAINAGE EASEMENTS EACH  
SIDE OF PROPERTY LINES AS INDICATED  
BY DASHED LINES EXCEPT AS OTHERWISE  
SHOWN.

FOR COMPLETE SURVEY DATA SEE  
ORIGINAL DEDICATION PLAT IN  
BOOK 94, PAGE 59-65 OF RECORDS.